

Town of Watertown

Jefferson County, Wisconsin

Dodge County

Farmland Preservation Areas

Farmland Preservation Areas

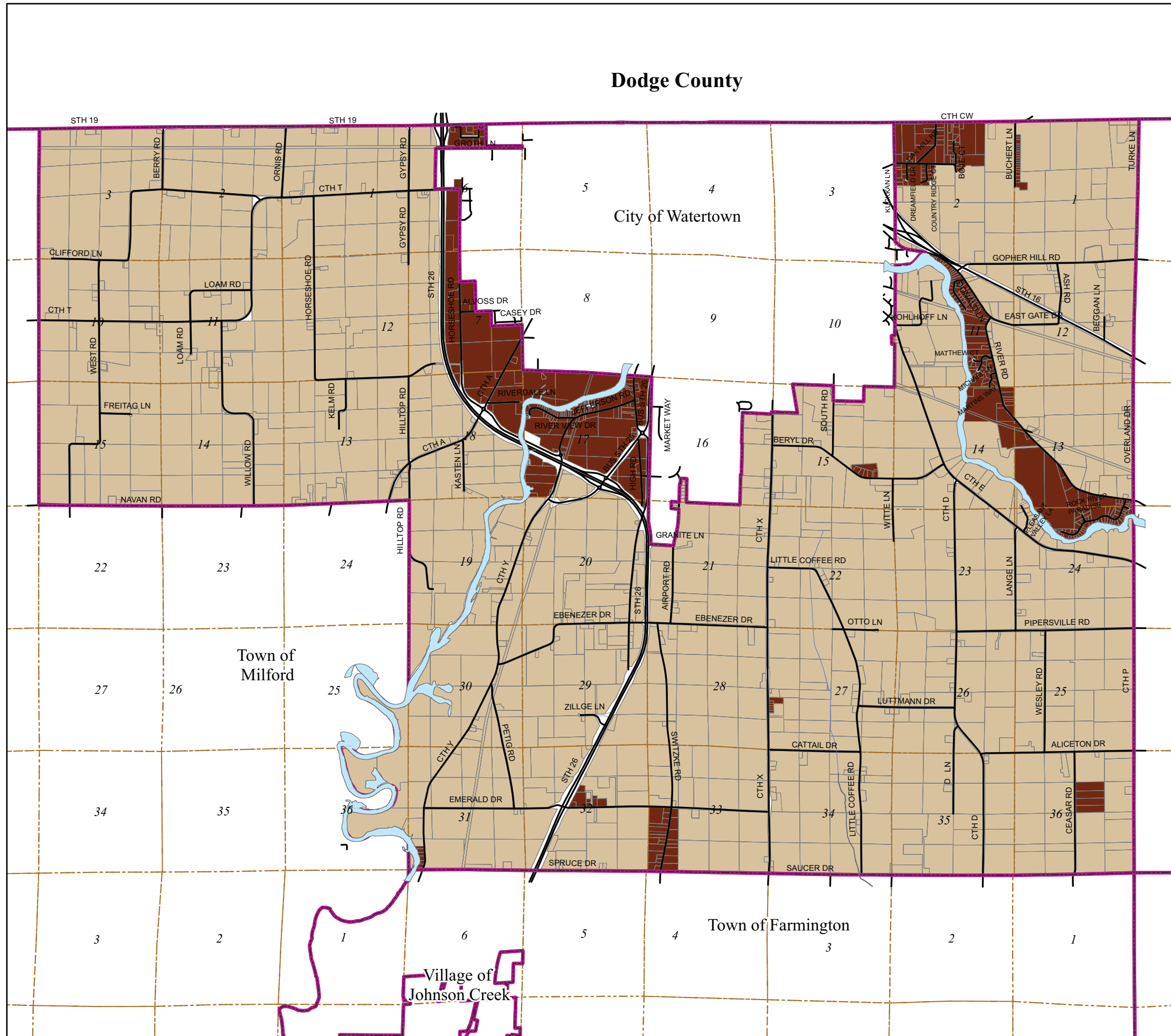
- Areas of Agricultural Use and Agriculture Related use

Nonagricultural Development Areas

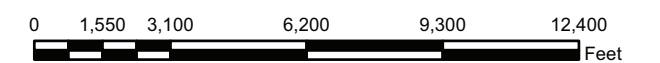
- Areas of Nonagricultural Development

Map Features

- Municipal Boundary
- Section Lines
- Parcel Boundary Lines
- Open Water
- Streams



Approximate Scale



The base map was created with data from Jefferson County Land Information Office who in no event assumes any liability regarding fitness of use of the information and any application by others, is the responsibility of the user.

Martenson & Eisele, Inc.

1377 Midway Road
Menasha, WI 54952
www.martenson-eisele.com
info@martenson-eisele.com
920.731.0381 1.800.236.0381

Planning
Environmental
Surveying
Engineering
Architecture



arcgis10754001gis.mxd_Adopted June 12, 2017